



## SUPPLEMENTARY REGULATIONS – SUPPORT EVENTS

**CAMS PERMIT NUMBER: 819/2605/01**

### **Incorporating**

Round 2 of the Kumho Tyre Super3 V8 Touring Car Series  
Round 3 of the 2019 Paynter Dixon Touring Car Masters Series  
Round 2 of the 2019 ECB SuperUtes Series  
Round 3 of the 2019 Australian Formula Ford Championship  
Motorsport Parts Australia Excel Cup

### **1. EVENT TITLE, DATE & VENUE**

- 1.1 The event will be known as the 2019 Truck Assist Winton SuperSprint, incorporating the Virgin Australia Supercars Championship, (hereinafter referred to as “the Event”) and be held at Winton Motor Raceway, Winton, Victoria on 24<sup>th</sup> – 26<sup>th</sup> May 2019.

### **2. ORGANISATION & STATUS**

- 2.1 The Event will be conducted under the FIA International Sporting Code including Appendices, the National Competition Rules (“NCR”) and the Race Meeting Standing Regulations (“RMSR”) of the Confederation of Australian Motor Sport Limited (“CAMS”), applicable Category Sporting and/or Technical Regulations, these Supplementary Regulations, any Further Regulations and Bulletins issued by the Organiser (see NCR 27) for the Event and any Driver Briefing Notes and instructions issued by the Race Director and/or Clerk of the Course.
- 2.2 The Event will be a Major National Race Event.
- 2.3 There may be a number of various demonstrations and passenger laps conducted at the Event and they will be conducted in accordance with NCR 20B and the CAMS Motor Sport Passenger Rides Activity (MSPRA) Policy.

### **3. EVENT ADMINISTRATION & STAFF**

#### **3.1 Promoter/Organiser:**

Winton Motor Raceway Pty Ltd  
PO Box 249, Benalla, Victoria, 3671  
Telephone: (03) 5760 7100  
Facsimile: (03) 5766 4249  
Website: info@wintonraceway.com.au

#### **3.2 Organising Committee: c/o the Promoter/Organiser:**

Chris Lewis-Williams, Jeff Grech, Keven Stoopman, Daryl McHugh, Wayne Giles

#### **3.3 Stewards of the Event (Support Events):**

Chair: David Bellenger  
Panel Member (SuperUtes Series): Bradley Tubb  
Panel Member: Bill Bennett

#### **3.4 Senior Race Officials:**

Secretary of the Event: Wayne Giles  
Deputy Secretary of the Event: Ruth Walsh  
Clerk of the Course: Daryl McHugh  
Deputy Clerk of the Course: Richard Weston  
Assistant Clerks of the Course: Bruce Robertson, Michael Neilsen  
Compliance Checker: Ross Coles  
Emergency Controller: Simon Maas  
Chief Medical Officer: Dr John Moran  
Chief Scrutineer: Cindy Davis  
Chief Starter: Matt Cornford  
Chief Timekeeper: Melissa Hatton

### 3.5 Judges of Fact

Start & Finish:	Daryl McHugh, Melissa Hatton, Matt Cornford
Pit Lane Speed:	TBA
Noise:	TBA
<b>ECB SuperUtes Series</b>	
Race Director (RD)	Nigel Faull
Category Administrator (CA)	Tony Bowker
Technical Delegate (TD)	TBA
Technical Assistant (TA)	Tony Bowker
<b>Kumho Tyre Super3 V8 Touring Car Series</b>	
Category Administrator (CA)	Liam Curkpatrick
Technical Advisor (TA)	Laurie Griffin
<b>Touring Car Masters Series</b>	
Category Administrator (CA)	Tony Hunter, Rowan Harman
Technical Delegate (TD)	John Mahncke
<b>Australian Formula Ford Championship</b>	
Category Manager (CM)	Iccy Harrington
Category Administrator (CA)	Phil Marrinon
Technical Delegate (TD)	Scott Black
<b>Circuit Excel</b>	
Category Administrator (CA)	Brendan Avard
Technical Advisor (TA)	Michelle Adams

### 4. CIRCUIT DETAILS

Venue:	Winton Motor Raceway
Length:	3 kilometres
Direction:	Racing is Clockwise
Race Administration:	Level 2 of the Control Tower
Stewards Office:	Level 1 of the Control Tower
Pole Position:	Drivers Left
Control Line:	Is adjacent to the Start/Finish Line
Notice Board:	Located at the rear of the Race Control Tower

### 5. ENTRIES & ENTRY FEES

- 5.1 Entries for this Event will open on distribution and receipt of these Supplementary Regulations.
- 5.2 All Competitors must complete the appropriate Series Entry Form for their category.
- 5.3 Entries for this Event will close on Friday May 10<sup>th</sup> 2019. The completed Entry Form must be received by the relevant Category Manager/Administrator no later than the close of business on this date.
- 5.4 The Entry Fee for this Event is as agreed between the relevant Category Manager/Administrator and the Promoter and is payable to the Category Manager/Administrator.
- 5.5 Entries for this Event are by invitation only and the submitting of an entry does not automatically imply an invitation was issued.
- 5.6 The maximum number of entries accepted for each category Event will be as agreed between the Promoter and the relevant Category Manager/Administrator.
- 5.7 Entries to this Event may be refused in accordance with the provisions of NCR 83.
- 5.8 Entries will be accepted for each category up to the track density for that category, and thereafter, accepted as reserves under conditions to be discussed at time of acceptance.

### 6. INSURANCE

- 6.1 Certain public, property, professional indemnity and personal accident insurance is provided by CAMS in relation to the event. Further details can be found in the CAMS Insurance Handbook, available at [www.cams.com.au](http://www.cams.com.au).

## **7. AWARDS, PRIZEMONEY AND TROPHIES**

7.1 In accordance with the relevant Category Sporting Regulations or as per arrangements with the Category Manager.

## **8. LICENCE REQUIREMENTS**

8.1 Each Competitor must hold a CAMS Competition Licence unless they comply with 8.2.1 or 8.2.2 below.

8.2 Each Driver must hold a minimum of a CAMS Provisional Circuit (PC) competition licence unless noted otherwise against a particular event or specified otherwise in the Sporting Regulations for the relevant Championship/Cup/Series/Trophy etc, or:

8.2.1 Hold a Motor Sport New Zealand National C1/C2 Competition Licence and valid Tasman Visa for the Event; or

8.2.2 Hold the minimum of the highest grade National Licence issued by a foreign ASN required for the event and obtains approval to compete from the ASN that issued their licence.

(i) Each such driver and competitor will be ineligible to score points in any Championship/Cup/Series/Trophy/etc connected with the Event; and

(ii) will be required to receive an authorisation to compete from CAMS prior to the Event.

8.3 The Organiser confirms that the circuit to be used for this Event holds the necessary CAMS National Track licence for each of the events nominated in these Supplementary Regulations.

## **9. DOCUMENT CHECK**

9.1 The Document Check will be conducted at the Main Circuit Administration Office adjacent to the Club Rooms near the Fox Street Gate.

9.2 Document Check will occur on Thursday May 23<sup>rd</sup> between 13:00 and 16:00.

9.3 Complete Event Document checking will be done by prearranged booking between each Category Manager/Administrator and Ruth Walsh (email: [racese secretary@wakefieldpark.com.au](mailto:racese secretary@wakefieldpark.com.au)).

9.4 In addition to the Entry Spreadsheet the Category Manager/Administrator must present the following, completed and signed, to the appointed Official/s at the time previously arranged;

- Competitor's CAMS Licence
- Competitor CAMS Vehicle Log Books
- Driver CAMS Licences and Passbooks
- Driver Club Membership Cards
- Entry Confirmation/Competitor's Declaration Form for Targeted Scrutiny/Pit Lane Disclaimers.

9.5 Competitors must ensure that they have completed the Pit Lane Disclaimer form for all team personnel. These will be available from and must be returned to Administration Checking prior to the car participating in its first session. Team members, whose names and signatures fail to be registered, will not be registered by CAMS for insurance purposes.

9.6 Upon successful presentation of the Pit Lane Disclaimer each Competitor will be provided one (1) wristband for each signature on the provided disclaimer. Without such wristband, no Crew Member will be permitted to be in Pit Lane. The maximum number of persons permitted in Pit Lane per race vehicle will be four (4), not including Drivers (due to space restraints).

## **10. LICENCES PRESENTED FOR DRIVER OBSERVATION AND ENDORSEMENT**

10.1 Any driver who wishes to present their licence for observation and endorsement MUST ensure their licence is identified and presented at Document Checking for on-forwarding to the appropriate Official/s, prior to the first official on track activity for the category that the driver is entered in.

## 11. SCRUTINEERING

- 11.1 Scrutineering will be conducted in accordance with the CAMS Targeted Scrutineering system.
- 11.2 Competitors will be advised as to the Scrutiny requirements for their car following Document Checking. Competitors must be prepared to submit their car, at such time as arranged, for Scrutiny and perform any such disassembly as may be required.
- 11.3 Any car or Driver may be prohibited from practice/qualifying or the race for safety reasons.
- 11.4 The Clerk of the Course, Chief Scrutineer and/or Technical Delegate/Advisor may require any car to be stopped and examined including any car involved in an accident.
- 11.5 Any car failing to display a Scrutiny Approval Sticker will not be permitted to participate.
- 11.6 Competitors must have a working Dorian Transmitter correctly fitted to their car/s at all times it is on the track.

## 12. PROTESTS & APPEALS

- 12.1 Protests must be lodged in accordance with Part XII and Appeals in accordance with Part XIII of the NCR's.

## 13. EVENTS

### 13.1 **Virgin Australia Supercars Championship:**

Conducted in accordance with the 2019 Supercars Operations Manual, the Supplementary Regulations and any Further Supplementary Regulations specifically published for this Competition.

### 13.2 **Kumho Tyre Super3 V8 Touring Car Series – Round 2:**

**2 X 20 Minute Practice**

**1 X 20 Minute Qualifying**

**2 x 12 Lap Races (time certain) and 1 X 14 Lap Race (time certain).**

Conducted in compliance with the 2019 Super3 V8 Touring Car Series Sporting and Technical Regulations as approved by CAMS.

### 13.3 **ECB SuperUtes Series – Round 3:**

**2 X 20 Minute Practice**

**1 X 20 Minute Qualifying**

**3 x 9 Lap Races (time certain)**

Conducted in compliance with the 2019 ECB SuperUtes Series Sporting and Technical Regulations as approved by CAMS.

### 13.4 **Touring Car Masters Series – Round 3:**

**1 X 20 Minute Practice**

**1 X 20 Minute Qualifying**

**4 x 12 Lap Races (time certain)**

Conducted in compliance with the 2019 Touring Car Masters Series Sporting and Technical Regulations as approved by CAMS.

### 13.5 **Formula Ford Championship – Round 3:**

**1 X 20 Minute Practice**

**1 X 20 Minute Qualifying**

**3 x 10 Lap Races (time certain)**

Conducted in compliance with the 2019 Australian Formula Ford Championship Sporting Regulations published by the FFA for cars complying with the requirements of 1<sup>st</sup> Category – Racing Cars – Formula Ford and Formula Ford 1600 – Technical Regulations published in the CAMS Manual.

### 13.6 **Motorsport Parts Australia Excel Cup**

**1 X 20 Minute Practice**

**1 X 20 Minute Qualifying**

**4 x 8 Lap Races (time certain)**

For cars complying with the requirements of 3rd Category – Touring Cars – Group 3E – Circuit Excel - Technical Regulations published in the CAMS Manual.

#### 14. SCHEDULE OF EVENTS

- 14.1 Any changes to the Schedule of Events, attached, will be updated in the Further Regulations.
- 14.2 The Schedule of Events may be varied or altered at the Promoter's discretion to ensure that all Virgin Australia Supercars Championship sessions and races stay on schedule. You will be notified of any change as soon as possible and the Organisers will do everything possible to maintain your involvement as an important part of the program.
- 14.3 The Organiser reserves the right to postpone, abandon or cancel the Event or any part of the Event in accordance with NCR 59.

#### 15. CREDENTIALS OFFICE

- 15.1 The Credentials Office is located adjacent to the Main Entrance Gate to the Circuit.
- 15.2 The Credentials Office will be open at the following times:

Friday 24 <sup>th</sup> May	06:00 – 17:00
Saturday 25 <sup>th</sup> May	06:00 – 17:00
Sunday 26 <sup>th</sup> May	06:00 – 13:00
- 15.3 Competitors will be allocated personnel passes as arranged between each Category Manager/Administrator and the Promoter/Organiser. All passes will be mailed to each Category Manager/Administrator for distribution.
- 15.4 No Team Vehicles (except 1 tender vehicle per team) are permitted to enter the Support Paddock. Any such vehicle parked in the Support Paddock without the correct pass will be removed to an area outside the Support Paddock, and any costs incurred will be charged to the Competitor.
- 15.5 Credentials will be required to be displayed from Friday 24<sup>th</sup> May 2019.
- 15.6 All Competitor/Team passes and Event Programs will be available from Category Managers. There will be no refund for persons having to pay at the gate. Additional weekend passes can be purchased at the Circuit Administration Office during the Event. Competitors/teams may leave passes in clearly marked envelopes for collection from the Credentials Office.
- 15.7 It is the responsibility of the competitor to ensure that Drivers, Pit Crew and other associated persons to the team, have the appropriate passes to access the circuit, Pre Grid/Assembly and Pit Lane together with the appropriate wrist band. Please Note: Security Guards will be located at the National Paddock entry gate. Please ensure that passes are visible at all times - no pass no entry.

#### 16. ACCESS/DEPARTURE TO/FROM THE CIRCUIT PROPERTY & SUPPORT PADDOCK

- 16.1 Access to the venue via Fox Street will be available all day on Thursday May 23<sup>rd</sup> 2019. On all other days (Friday, Saturday and Sunday) access will only be available between 06:00 to 09:00. All access after 09:00 on these days will be via the main gate on Glenrowan - Winton Road.
- 16.2 Gates into the venue on Glenrowan - Winton Road will open at 06:00 on Friday, Saturday and Sunday.
- 16.3 The Support Paddock will be open for team park-up from 08:00 to 11:30 on Thursday May 23<sup>rd</sup> 2019.
- 16.4 The gate onto Fox Street may be used to exit the Venue at any time.
- 16.5 All credentials/passes will be scanned on entry to the Circuit throughout the Event, and Competitors should ensure that all persons associated with them are to keep their credential and some form of personal identification on or near them at all times which clearly identifies them as the person wearing the allocated credential.
- 16.6 All credentialed persons leaving the Circuit and wishing to return the same day must ensure their credential is scanned out as they leave the Circuit. Credentials automatically reset at 00:00 each night for use the next day.
- 16.7 Competitors should note that there will be limited Security in the Support Paddock throughout the Event and that they should take their own security precautions at all times, particularly while their cars are on the track.



- 16.8 No Transporters or trailers are allowed to enter the Circuit precinct until direction has been given at the designated meeting point **and** until the Category Manager is onsite to facilitate park up.
- 16.9 The washing of transporters at the Circuit is **not** permitted.
- 16.10 All access lanes in and around the Support Paddock must be kept clear at all times during the Event including when unloading your car/s from your race transporter or trailer.
- 16.11 Competitors must work on their race vehicles in the Garage/Carport provided and not in or from their own transporters.
- 16.12 To exit the circuit, transporters or trailers are only permitted to leave the park up area and enter the Support Paddock between **14:00** and **17:45** or after **19:00 (AEST)** on Sunday May 26<sup>th</sup>, unless otherwise instructed by the Winton Motor Raceway Manager.
- 16.13 Transporters or trailers are not permitted to exit the Support Paddock between **17:45** and **19:00 (AEST)** on Sunday May 26<sup>th</sup>, unless otherwise instructed by the Winton Motor Raceway Manager.
- 16.14 Competitors, including their associated people, are **not** permitted to sleep overnight in the Support Paddock area.
- 16.15 Where a competitor requires their personnel to work late into the evening and/or into the early hours of the following morning, they must first attain permission by advising their Category Manager who then must seek permission from the Promoter.

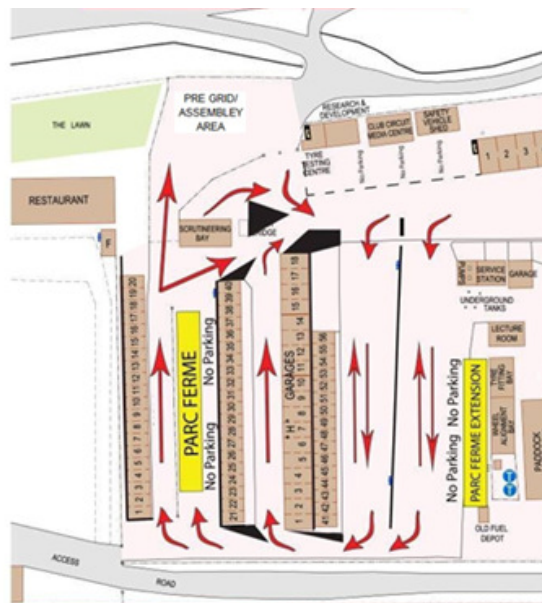
## **17. SUPPORT PADDOCK SPACE ALLOCATION**

- 17.1 The Support Paddock allocation will be planned at the discretion of the Promoter in consultation with the relevant Category Manager/Administrator.

## **18. PADDOCK AREA SAFETY**

- 18.1 All trolleys or hand trucks transporting team equipment i.e. tyres, compressed air/gas bottle, etc., when being moved in a Public Area must be moved by a minimum of two (2) Team Personnel. A minimum of one (1) Pit Crew Member to push the trolley/hand truck and a minimum of one (1) Pit Crew Member acting as a Spotter is required at all times.
- 18.2 When transporting fuel within a Public Area, i.e. the Paddock or access roads, the transportation must be conducted by a minimum of two (2) team personnel. A minimum of one (1) suitably attired pit crew member to push the trolley/drum and a minimum of one (1) suitably attired Pit Crew Member acting as a spotter carrying a minimum of one (1) operational 4.5kg Dry Chemical Fire Extinguisher is required at all times.
- 18.3 In all areas where fuel is being stored it must be in a location which is adequately , have unimpeded access and is clean and free of potentially flammable materials e.g., paper, rags, oily fabrics etc. Smoking must be strictly forbidden.
- 18.4 All competitors must ensure that all refuelling, and defueling is performed in accordance with WorkSafe Victoria laws, regulations and compliance codes, and a suitably attired Pit Crew Member is in attendance with a minimum of one (1) operational 4.5kg Dry Chemical Fire Extinguisher available for use in an emergency.
- 18.5 During any refuelling or defuelling operation within a garage or carport, all non-essential personnel such as sponsors, families, or other guests of the Team must vacate the Garage, Carport or area until refuelling has been completed.
- 18.6 The handling of fuel and its containers together with compressed air bottles/gas cylinders must be in compliance with government regulations. Fuel containers must meet published standards and compressed air bottles/gas cylinders must be transported, stored and used in accordance with established standards.
- 18.7 Competitors are reminded that fuels, oils, lubricants and coolants are highly specialised substances. And must be aware that these agents may contain substances that are extremely dangerous to health if misused, inhaled or allowed to contact human skin.
- 18.8 Using petrol for general cleaning and washing is a common misuse of a potentially dangerous substance and is forbidden.
- 18.9 The transportation or movement of compressed air/gas cylinders with the pressure regulator attached is strictly forbidden.

- 18.10 Any signs within the property advising limitations, e.g. No Smoking, Speed Limits, etc., must be strictly adhered to.
- 18.11 Welding is NOT permitted at any time in the Paddock Area including the Garage/Carports.
- 18.12 Welding will only be permitted if it is undertaken in the “Paddock Workshop” which is located on the southern side of the property adjacent to the Paddock Dam. Approval to use the Paddock Workshop must be sought, at all times, from the Winton Motor Raceway Manager (Jeff Grech).
- 18.13 All competitors must ensure that any welding is performed in accordance with WorkSafe Victoria laws, regulations and compliance codes, and a suitably attired pit crew member is in attendance with a minimum of one (1) operational 4.5kg Dry Chemical Fire Extinguisher available for use in an emergency.
- 18.14 All competitors must ensure that all WorkSafe Victoria laws, regulations and compliance codes are adhered to at all times.
- 18.15 A speed limit of 10km/h applies to all vehicles in the Support Paddock and all other Public Areas within the venue.
- 18.16 All racing cars, trucks and other vehicles are to travel in the directions as shown on the Paddock Movements Diagram (below). Signage and Barriers have been put in place to assist you when moving within this area. Please take the time to familiarise yourself with the directions of travel.



**19. SAFE WORKING CONDITIONS**

- 19.1 This Event will be conducted under and in accordance with CAMS OH&S, Safety 1<sup>st</sup> and Risk Management Policies, which can be found on the CAMS website at [www.cams.com.au](http://www.cams.com.au).
- 19.2 Competitors are reminded that they are responsible for the working conditions of their associated personnel at all times and must ensure that all applicable safe working conditions are met.
- 19.3 In addition to the CAMS Remotely Piloted Aircraft (RPA) Policy, commercial and private, remotely piloted, unmanned aircraft (i.e. “drones”, the ground-based controller and the system of communications connecting the two) are prohibited unless authorised by the Civil Aviation Safety Authority (CASA) and the Organiser.

**20. FUEL, FUEL HANDLING & STORAGE**

- 20.1 In accordance with relevant Category Sporting Regulations.
- 20.2 Competitors are not permitted to bring their own fuel on site. Fuel must be purchased from the supplier, Race Fuels Pty Ltd at the Circuit. For further details including

placement of orders and operating hours, contact Mark Tierney of Race Fuels Pty Ltd (telephone 03 9686 8645, mobile 0419 511 517 or [fuelorder@racefuels.com.au](mailto:fuelorder@racefuels.com.au)).

- 20.3 The fuel depot is located at the western end of the National Paddock. No other fuel supplier will be permitted to access the circuit.
- 20.4 If fuel is to be transported or stored in a container the containers must meet AS2906. Metal containers are preferred.
- 20.5 Each Competitor may only store two (2) x twenty (20) Litre drums of fuel at any time.
- 20.6 All bulk supply of fuel to be stored must be stored in the fuel depot area.
- 20.7 Fuel samples taken from competing cars will be compared with samples from the Circuit supply and any discrepancies will be referred to the Stewards of the Meeting.
- 20.8 Note Article 18 of these Supplementary Regulations for safety requirements for fuel handling and storage.

## **21. PIT LANE**

- 21.1 Pit Lane is divided into three (3) lanes and is defined as the area in which the speed limit applies (indicated by the speed restriction and de-restriction signs). The outer lane, closest to the Pit Signalling Wall should not be used, the middle lane is the 'fast lane', and the lane closest to the Garages is the 'inner lane' and is the only area where any work may be carried out on a car.
- 21.2 It is the responsibility of the competitor to hold their car stationary until it is safe to move from its pit.
- 21.3 Competitors must not paint lines on any part of Pit Lane.
- 21.4 No equipment may be placed on the Pit Signalling Wall during the Event.
- 21.5 Any person entering the Pits/Pit Lane Area must have the appropriate pass/wrist band and must be attired in accordance with the CAMS Manual of Motor Sport, Schedule D Article 3.6 (hereinafter referred to as "suitably attired").
- 21.6 Only three (3) persons per participating car and Essential Race Officials, and Television Crews specifically authorised by the Clerk of the Course, are permitted at the Pit Signalling Wall.
- 21.7 During the start of the Formation Lap only Race Officials, and Television Crews specifically authorised by the Clerk of the Course, are permitted at the Pit Signalling Wall. At the Start of a Race, in addition to those already authorised, one (1) Team Crew Member per Car, to provide directions to the Driver, is permitted at the Pit Signalling Wall until the Category comes under starter's orders, at which time they MUST exit the area.
- 21.8 In accordance with the Race Meeting Standing Regulations, Article 10.1, smoking is not permitted in the Pits, Pit Lane and/or Garages at any time during the event. For the purpose of this clause the Garages and/or Carports located within the Support Paddock will be deemed as included.
- 21.9 No person under the age of sixteen (16) years will be permitted in pit lane at any time, unless they are an appropriately licenced Driver or Competitor that is competing in the relevant event.
- 21.10 Unless otherwise stated in the relevant Series Sporting Regulations for your category, the maximum number of personnel who may be present in the Pit Lane per vehicle entered is four (4).
- 21.11 In accordance with the Race Meeting Standing Regulations, Article 6.10(f), the use of reverse gear in Pit Lane is strictly forbidden.
- 21.12 At Pit Lane exit no part of a car exiting the pits shall cross the solid line that delineates the Pit Lane exit from the track and at Pit Lane entry no part of a car shall cross the solid line that delineates the Pit Lane Entry from the Track in either direction. In such case penalties as detailed below may be imposed. The Judges of Fact will be the Senior Flag Marshals located at Flag Point 1 for Pit Lane exit and at Flag Point 11 for Pit Lane entry.
  - (i) During Practice or Qualifying:
    - (a) First adjudged breach – warning
    - (b) Second adjudged breach - the loss of the fastest lap time recorded by the car during the session.



- (c) Third and subsequent adjudged breaches – the loss of the next fastest time recorded by the car and so on during the session.
  - (ii) During Racing:
    - (a) For each adjudged breach a pit lane drive through penalty.
- 21.13 Following a requirement by CAMS Public Liability Insurers, all persons entering or stationed in Pit Lane during the time the track is closed for competition (hot pit lane) will be required to have completed and signed a standard form (Pit Lane Disclaimer) relating to the exclusion of liability, release and indemnity. The requirement applies to bona fide Team Members (the definition of which includes Mechanics/Pit Crew/Signalling Crew) who are actually required to be in the “Hot Pit Lane” to undertake their duties. Anyone who has not completed the disclaimer will not be permitted to enter the “Hot Pit Lane”. It is the responsibility of the Competitor to ensure that all persons stationed in the “Hot Pit Lane” have completed and submitted the forms to administrative checking for inclusion with and attachment to their Entry Form.
- 21.14 Supercars teams are permanently garaged in the Pit Lane garages and Support Category teams working in Pit Lane, for their sessions or races, must not interfere with the Supercar teams, and must leave the Pit Lane as soon as possible, when directed by an official.
- 21.15 Support Category tender vehicles MUST be positioned as close as possible to the Garages (without interfering with Supercars teams housed in the garages) leaving sufficient room to work on race vehicles in the ‘inner lane’ without encroaching on the ‘fast lane’.

## **22. ASSEMBLY/PRE GRID AREA**

- 22.1 For Practice, Qualifying and Races, all competing vehicles must go to the Pre Grid/Assembly Area at the northern end of the Paddock when called, unless otherwise directed. Drivers will then be directed onto the circuit where they will begin their session.
- 22.2. Competitors are advised that they should ensure that their competing vehicle is in the Pre Grid/Assembly area and prepared to compete at least 20 minutes prior to the scheduled start time for their scheduled activity. Late attendance may result in the competing vehicle being prohibited from competing.
- 22.3 Helmets and other Driver Apparel may be checked at any time in the Pre Grid/Assembly Area.
- 22.4 Authorised Pit Crew, for that Category called to the Pre Grid/Assembly area, should make their way, via the Southern Access Road, to the National Paddock entry gate at least 20 minutes prior to the commencement of the scheduled activity to gain access to Pit Lane.
- 22.5 Tender vehicles (one (1) per competing vehicle) wishing to access the Pit Lane should make their way, via the southern access road, at least 20 minutes prior to the commencement of the scheduled activity, to the National Paddock entry gate to gain access to Pit Lane. Access to the lane will be given once the previous session or race is complete and the apron is clear. This tender vehicle must be no bigger than a standard one ton utility, van or station wagon. F100 or high roof Transit style vehicles and trailers will not be permitted to be used as tender vehicles.

## **23. START PROCEDURE**

- 23.1 All race starts starts will be in accordance with the relevant Category Sporting Regulations.
- 23.2 Any category without Sporting Regulations will have a non- championship standing start (as per Race Meeting Standing Regulation 6.4 – Step 2 and 3 – Non-Championship – Standing Start) for each race.

## **24. ADDITIONAL SIGNAL POINT**

- 24.1 In addition to the flag signal shown at the Control Line, the following flag signals will be displayed from flag marshal point at Turn Nine (9) located on Drivers Right: the Black Flag and Black Flag with Orange Disc (Mechanical Black Flag).
- 24.2 All competitors after having been shown the mechanical deficiency or black flags are

required to enter pit lane immediately.

## 25. DRIVER BEHAVIOUR & TRACK LIMITS

25.1 Driver behaviour is detailed in the Code of Driving Conduct in the Race Meeting Standing Regulations in the CAMS Manual of Motor Sport. The Senior Flag Marshal at each post is designated as a Judge of Fact with regard to Driver behaviour, and in particular, shortening the course, and appropriate action will be taken if infringements are observed. Any Driver exceeding the track limits, as defined by the solid line at the track edges, may be shown the Black Flag and brought into Pit Lane.

## 26. EXITING THE TRACK AFTER SESSIONS AND RACES

26.1 At the end of each practice, qualifying session or race, unless otherwise directed by an official of the Event, all cars must exit the circuit via Pit Lane entry road, travel along the “fast” lane and then via the Support Paddock return road adjacent to Pit Exit on drivers left, which then runs under the Media Centre to the Support Paddock.

26.2 Tender vehicles and any competition vehicle/s located in Pit Lane at the end of a practice, qualifying session or race, unless otherwise directed by an official of the Event, must remove their vehicle via the Support Paddock return road adjacent to Pit Exit on drivers left, which then runs under the Media Centre to the Support Paddock.

26.3 The Support Paddock Area is a General Public Area with a speed limit of 10km/h.

## 27. PARC FERMÉ

27.1 In accordance with the relevant Category Sporting Regulations.

27.2 Parc Fermé is located adjacent to the Scrutiny Bay in the Support Paddock.

27.3 Cars may be required to remain in Parc Fermé until at least thirty (30) minutes after the posting of the provisional results or until the Stewards of the Meeting order their release.

27.4 Cars which have not been taken to Parc Fermé after being directed to proceed there may not be classified. Only those Officials responsible for supervision may enter Parc Ferme. No intervention of any kind is allowed unless authorised by such Officials.

## 28. DRIVER & TEAM MANAGERS BRIEFINGS

28.1 Attendance is compulsory and failure to be present or on time at the Driver & Team Managers Briefing will result in a penalty as detailed in the CAMS Manual.

28.2 **Date:** Friday May 24<sup>th</sup> 2019

28.3 **Times:**  
08:15 Formula Ford Championship  
08:45 ECB SuperUtes Series  
09:45 Touring Car Masters Series

28.4 Location: Briefing Room, which is located in the Support Paddock.

28.5 If any further Team Manager Briefings are required they will be advised by a Bulletin at the Event.

## 29. DRIVER BRIEFINGS

29.1 Attendance is compulsory and failure to be present or on time at the Drivers Briefing will result in a penalty as detailed in the CAMS Manual.

29.2 **Date:** Friday May 24<sup>th</sup> 2019

29.3 **Times:**  
07:45 Motorsport Parts Australia Excel Cup  
09:15 Kumho Tyre Super3 V8 Touring Car Series

29.4 Location: Briefing Room, which is located in the Support Paddock.

29.5 If any further Driver Briefings are required they will be advised by a Bulletin at the Event.

## 30. TIMING

30.1 All sessions and races will finish at the control line, which is located in front of the Pits, on the track. All times will be taken from this line by the Chief Timekeeper.

30.2 All sessions and races will be “time certain” to ensure that the program time for each category is not unduly effected by time delays experienced in other sessions or races. Category Managers/Administrators and/or Competitors will be advised if the finish times detailed in the schedule vary on the day.

- 30.3 Timing of all Support Category sessions and races will be by electronic means using the Australian Dorian System, and all competitors must have a working DATA 1 Timing Transmitter fitted to their car prior to scrutineering and during all activity on the circuit.
- 30.4 Cars without an operational timing transmitter during any session may not have a time recorded until the transmitter is functioning and operating correctly.
- 30.5 Transmitters can be purchased /arranged from Dorian Industries P/L ph: 03 9931 1371.

### **31. MEDICAL SERVICES**

- 31.1 The Circuit Medical Centre is located in the National Paddock, at the base of the Control Tower and will be operational during the following times:

Thursday 23 <sup>rd</sup> May	10:00 – 17:00
Friday 24 <sup>th</sup> May	08:00 – 17:30
Saturday 25 <sup>th</sup> May	08:00 – 17:30
Sunday 26 <sup>th</sup> May	08:00 – 17:45

- 31.2 Any medical assistance that is required outside of the operating hours outlined in 10.1, please contact 000. The address to give to Emergency Services is:  
“Your Specific Location” Eg: Garage 1, Fox Street/Glenrowan-Winton Road, Winton.  
Alternatively attend casualty at: Wangaratta Base Hospital, 35-47 Green Street, Wangaratta, (03) 5722 5111.

### **32. RACE TRACK WALK/INSPECTION**

- 32.1 Teams are permitted to undertake their Race Track walk between 12:00 and 17:00 on Thursday May 23<sup>rd</sup> 2019.
- 32.2 All personnel participating in the Race Track walk must wear a high visibility vest.

### **33. RESPONSIBILITIES OF THE COMPETITOR**

- 33.1 The presentation of a car for Scrutiny will be deemed an implicit statement of conformity.
- 33.2 Competitors must ensure that their cars comply with the conditions of eligibility throughout the Event.
- 33.3 Excessive fuel spillage, no matter whether on the track, pit lane or paddock will be considered a breach of NCR 183(i)(i).
- 33.4 Competitors must ensure the Driver of any large tender vehicles or prime mover/s in their team must not rotate the front steering whilst the vehicle is stationary as this causes damage to the surface in the Paddock. Recovery of costs will be sought to repair any damage caused by non compliance.

### **34. REPLACEMENT AUTOMOBILES**

- 34.1 A Replacement Automobile may be nominated in accordance with the relevant Category Sporting Regulations.
- 34.2 In cases where there are no Sporting Regulations the following will apply. Once the first qualifying session has commenced, any automobile that has been entered to compete may not be replaced with another automobile.

### **35. CHANGE OF DRIVER**

- 35.1 A substitute driver may be nominated in accordance with the relevant Category Sporting Regulations.
- 35.2 A competitor in a category that does not have Sporting Regulations may nominate a substitute driver who may be permitted to compete in the remainder of the event subject to the approval of the Stewards (in accordance with RMSR 2.5 – Change of Driver).

### **36. WASTE OIL/TYRES**

- 36.1 Waste oil is to be disposed of in the designated waste oil bins provided. These are clearly identified and distributed throughout the paddock area.
- 36.2 All storm water drains lead directly to the local waterways and the Environmental Protection Agency (EPA) will be monitoring the situation in the lead up and throughout the Event.
- 36.3 This ban includes the washing of any wheel rims within the vicinity of storm water drains.

- 36.4 Competitors are advised that the EPA is taking an extremely proactive approach to this matter and Teams are put on notice that any infringement of this directive will result in action being taken by either the Promoter or the EPA or both. The EPA has the ability to prosecute offenders with heavy penalties.
- 36.5 Used tyres must be removed from Winton Motor Raceway, by the competitor, for disposal in an appropriate manner.

### **37. IN-CAR CAMERAS AND VIDEO FOOTAGE**

- 37.1 No in-Car cameras other than those fitted by personnel authorised by the broadcaster, or for Category judicial purposes are allowed. This includes any camera mounted to the Car and/or the body or helmet of the Driver or a Passenger in any Passenger Ride Activity. The use of hand held cameras are not permitted.
- 37.1 All in-Car footage taken during a Supercars event remains the property of Supercars Australia Pty Ltd. Competitors are permitted access to the video images recorded by the cameras, however the footage is “strictly for private internal purposes”; that is, it cannot be sold, licensed, broadcast, published, posted on social media, commercially exploited or otherwise publicly displayed or distributed, including in any case via internet.

### **38. ALCOHOL, DRUGS AND OTHER SUBSTANCES**

- 38.1 Any holder of a CAMS ‘Competition’ or ‘Officials’ licence (or equivalent licence issued by another ASN) may be tested for the presence of drugs (or other banned substances) and subject to a penalty(ies) for a breach in accordance with the CAMS Anti-Doping Policy and/or the CAMS Illicit Drugs in Sport (Safety Testing) Policy as published on the CAMS website. Consumption of alcohol in the paddock, pits or any section of the competition venue/course under the control of the Officials is forbidden until all competition is concluded each day. Accordingly, any holder of a CAMS ‘Competition’ or ‘Officials’ licence (or equivalent licence issued by another ASN) may also be tested for the presence of alcohol by a CAMS Accredited Testing Official (CATO) in accordance with the CAMS Standard Operating Procedure for Breath Alcohol Testing.

### **39. OTHER REGULATIONS**

- 39.1 For any Virgin Australia Supercars Championship activity, please refer to the Supercars Championship Supplementary and/or Further Supplementary Regulations, which are issued separately. If there is a conflict between the Supercars Championship and Support Category Supplementary Regulations, the Supercars Regulations will take priority (for Supercars only).

### **40. MERCHANDISE SELLING**

- 40.1 The selling of any team merchandise without prior approval in writing by the Promoter is prohibited.

### **41. ON TRACK ENTERTAINMENT**

- 41.1 Matt Mingay and his team will be providing on track entertainment, with Motor Bikes and/or Drift Cars, on Friday May 24<sup>th</sup>, Saturday May 25<sup>th</sup> and Sunday May 26<sup>th</sup>.

### **42. GRID DETERMINATION, POINTSCORE & FINAL RESULT (MOTORSPORT PARTS AUSTRALIA EXCEL CUP COMPETITORS ONLY)**

- 42.1 The grid for Race 1 (One) will be determined from the fastest qualifying lap time of each car as detailed in Race Meeting Standing Regulation 5.3 – Progressive Grid.
- 42.2 If for any reason the Qualifying session is not conducted or the qualifying lap times are not able to be published, each grid position for Race 1 (One) will be determined by the fastest lap time achieved by each car in the Practice Session.
- 42.3 The Grid for subsequent races will be determined by the finishing order of the classified finishers in the preceding race as detailed in Race Meeting Standing Regulation 5.3 – Progressive Grid. Cars that did not finish (DNF) will be placed at the rear of the grid and any car that did not start (DNS) a race will be placed at the rear of any cars that recorded a DNF in the race preceding the one in question.
- 42.4 The driver gaining the highest outright points total over the 4 (four) races will be declared



the winner of the Motorsport Parts Australia Excel Cup.

- 42.5 Points for each race will only be awarded to the drivers classified as finishers in the final results of that race as follows.

Finishing Position	Points	Finishing Position	Points	Finishing Position	Points
1 <sup>st</sup>	50	11 <sup>th</sup>	30	21 <sup>st</sup>	11
2 <sup>nd</sup>	45	12 <sup>th</sup>	28	22 <sup>nd</sup>	10
3 <sup>rd</sup>	43	13 <sup>th</sup>	26	23 <sup>rd</sup>	9
4 <sup>th</sup>	41	14 <sup>th</sup>	25	24 <sup>th</sup>	8
5 <sup>th</sup>	39	15 <sup>th</sup>	23	25 <sup>th</sup>	7
6 <sup>th</sup>	37	16 <sup>th</sup>	21	26 <sup>th</sup>	5
7 <sup>th</sup>	35	17 <sup>th</sup>	19	27 <sup>th</sup>	4
8 <sup>th</sup>	33	18 <sup>th</sup>	17	28 <sup>th</sup>	3
9 <sup>th</sup>	31	19 <sup>th</sup>	15	29 <sup>th</sup>	2
10 <sup>th</sup>	30	20 <sup>th</sup>	13	30 <sup>th</sup>	1

- 42.6 In the case where 2 (two) or more drivers score the same total point score the winner will be that driver that finished in a higher placing in the final race.

**43. REMOVAL OF AUTOMOBILES FROM THE CIRCUIT (MOTORSPORT PARTS AUSTRALIA EXCEL CUP COMPETITORS ONLY)**

- 43.1 Following the commencement of the first practice session and prior to the release of all automobiles from the Parc Fermé established following the final race, the removal of any competition automobile from the circuit it is not permitted, without the prior express written approval of the Chief Scrutineer.

**44. PARC FERMÉ (MOTORSPORT PARTS AUSTRALIA EXCEL CUP COMPETITORS ONLY)**

- 44.1 Any car that is directed to attend Parc Fermé must proceed directly the designated area via the most direct route (or as directed by Officials) at the conclusion of qualifying and racing, without returning to pit or paddock areas and without interference from any third party (other than an Official). See also Supplementary Regulation 27.
- 44.2 A car may not be removed from Parc Fermé and no third party is permitted to enter Parc Fermé except with the express direction of the Chief Scrutineer.

**45. SPONSOR SIGNAGE (MOTORSPORT PARTS AUSTRALIA EXCEL CUP COMPETITORS ONLY)**

- 45.1 Each Competitor MUST leave exclusive space on the automobile for Event Sponsor signage as follows:
- 45.1.1 Front windscreen strip: A strip as supplied by the CA must be fixed and extend across the entire upper portion of the front windscreen.
- 45.1.2 Door Panel: A panel as supplied by the CA must be fixed above the race number on each front door of each automobile.



**Wayne Giles**  
**SECRETARY OF THE EVENT**  
**Winton SuperSprint**

## 46. SCHEDULE

46.1 Friday 24<sup>th</sup> May

	START	FINISH	CATEGORY	DURATION	SESSION
B 1			<i>Race Officials</i>		<i>Officials Briefing</i>
B 2	07:45		Circuit Excel		Driver Briefing
B 3	08:15		Formula Ford		Team Manager/Driver Briefing
P 1	08:25	08:45	Circuit Excel	20 minutes	Practice 1
B 4	08:45		ECB SuperUtes Series		Team Manager/Driver Briefing
P 2	08:55	09:15	Formula Ford	20 minutes	Practice 1
B 5	09:15		Kumho Super3		Driver Briefing
P 3	09:25	09:45	ECB SuperUtes Series	20 minutes	Practice 1
B 6	09:45		Touring Car Masters		Team Manager/Driver Briefing
P 4	09:55	10:15	Kumho Super3	20 minutes	Practice 1
P 5	10:25	10:45	Touring Car Masters	20 minutes	Practice 1
Q 1	11:05	11:25	Circuit Excel	20 minutes	Qualifying
P 6	11:35	11:55	Formula Ford	20 minutes	Practice 2
P 7	12:05	12:25	ECB SuperUtes Series	20 minutes	Practice 2
P 8	12:35	12:55	Kumho Super3	20 minutes	Practice 2
R 1	13:15	13:35	Circuit Excel	8 laps or 1 lap after 13:33	Race 1
Q 2	13:45	14:05	Formula Ford	20 minutes	Qualifying
Q 3	14:15	14:35	ECB SuperUtes Series	20 minutes	Qualifying
Q 4	14:45	15:05	Kumho Super3	20 minutes	Qualifying
Q 5	15:15	15:35	Touring Car Masters	20 minutes	Qualifying
	15:50	15:55	Supercars - Media	5 minutes	TV Track Time
	15:55	16:25	Supercars	30 minutes	Event Rides
	16:30	17:30	Supercars	45 minutes	Track Walk
B 7	17:30		Supercars		Competitor's Authorised Representatives Briefing

46.2 Saturday 25<sup>th</sup> May

	START	FINISH	CATEGORY	DURATION	SESSION
B 8			<i>Race Officials</i>		<i>Officials Briefing</i>
E 3	07:45	08:05	Supercars	20 minutes	Safety & Course Car Rides & Pit Lane Walk
R 2	08:15	08:35	Kumho Super3	12 laps or 1 lap after 08:33	Race 1
R 3	08:50	09:10	ECB SuperUtes Series	9 laps or 1 lap after 09:08	Race 1
P 8	09:25	09:55	Supercars	30 minutes	Additional Drivers Practice
R 4	10:10	10:30	Touring Car Masters	12 laps or 1 lap after 10:28	Race 1 Trophy Race
P 9	10:45	11:25	Supercars	40 minutes	Practice 1
R 5	11:40	12:00	Circuit Excel	8 laps or 1 lap after 11:58	Race 2
B 9	12:00		Supercars		Competitor's & Driver's Briefing
R 6	12:10	12:30	Formula Ford	10 laps or 1 lap after 12:28	Race 1
R 7	12:40	13:00	Kumho Super3	12 laps or 1 lap after 12:58	Race 2
Q 6-1	13:15	13:25	Supercars	10 minutes	Qualifying Part 1
Q 6-2	13:30	13:40	Supercars	10 minutes	Qualifying Part 2
Q 6-3	13:45	13:55	Supercars	10 minutes	Qualifying Part 2
R 8	14:15	14:35	ECB SuperUtes Series	9 laps or 1 lap after 14:33	Race 2
R 9	14:45	15:05	Touring Car Masters	12 laps or 1 lap after 15:03	Race 2
R 10	15:50	16:55	Supercars	40 laps or 1 lap after 16:53	Race 13 - 120kms

46.3 Sunday 26<sup>th</sup> May

	<b>START</b>	<b>FINISH</b>	<b>CATEGORY</b>	<b>DURATION</b>	<b>SESSION</b>
<b>B 10</b>			<i>Race Officials</i>		<i>Officials Briefing</i>
<b>E 8</b>	<b>07:45</b>	<b>08:05</b>	<b>Supercars</b>	<b>20 minutes</b>	<b>Safety &amp; Course Car Rides &amp; Pit Lane Walk</b>
<b>R 11</b>	<b>08:15</b>	<b>08:35</b>	<b>Formula Ford</b>	<b>10 laps or 1 lap after 08:33</b>	<b>Race 2</b>
<b>R 12</b>	<b>08:45</b>	<b>09:05</b>	<b>Circuit Excel</b>	<b>8 laps or 1 lap after 09:03</b>	<b>Race 3</b>
<b>P 10</b>	<b>09:20</b>	<b>09:50</b>	<b>Supercars</b>	<b>30 minutes</b>	<b>Practice 2</b>
<b>R 13</b>	<b>10:05</b>	<b>10:25</b>	<b>Touring Car Masters</b>	<b>12 laps or 1 lap after 10:23</b>	<b>Race 3</b>
<b>R 14</b>	<b>10:35</b>	<b>10:55</b>	<b>ECB SuperUtes Series</b>	<b>9 laps or 1 lap after 10:53</b>	<b>Race 3</b>
<b>Q 7-1</b>	<b>11:10</b>	<b>11:20</b>	<b>Supercars</b>	<b>10 minutes</b>	<b>Qualifying Part 1</b>
<b>Q.7-2</b>	<b>11:25</b>	<b>11:35</b>	<b>Supercars</b>	<b>10 minutes</b>	<b>Qualifying Part 2</b>
<b>Q 7-3</b>	<b>11:40</b>	<b>11:50</b>	<b>Supercars</b>	<b>10 minutes</b>	<b>Qualifying Part 3</b>
<b>R 15</b>	<b>12:05</b>	<b>12:30</b>	<b>Kumho Super3</b>	<b>14 laps or 1 lap after 12:28</b>	<b>Race 3</b>
<b>R 16</b>	<b>12:40</b>	<b>13:00</b>	<b>Touring Car Masters</b>	<b>12 laps or 1 lap after 12:58</b>	<b>Race 4</b>
<b>R 15</b>	<b>13:45</b>	<b>15:30</b>	<b>Supercars</b>	<b>67 laps or 1 lap after 15:28</b>	<b>Race 14 - 200kms</b>
<b>R 16</b>	<b>15:50</b>	<b>16:10</b>	<b>Formula Ford</b>	<b>10 laps or 1 lap after 16:08</b>	<b>Race 3</b>
<b>R 17</b>	<b>16:20</b>	<b>16:40</b>	<b>Circuit Excel</b>	<b>8 laps or 1 lap after 16:38</b>	<b>Race 4</b>